

DeepXDE: A Deep Learning Library for Solving Forward and Inverse Differential Equations

Lu Lu

Division of Applied Mathematics, Brown University

SIAM MDS20



Deep learning for partial differential equations (PDEs)

PDE-dependent approaches:

- image-like domain
 - ▶ e.g., (Long et al., *ICML*, 2018), (Zhu et al., *J Comput Phys*, 2019)
- parabolic PDEs, e.g., through Feynman-Kac formula
 - ▶ e.g., (Beck et al., *J Nonlinear Sci*, 2017), (Han et al., *PNAS*, 2018)
- variational form
 - ▶ e.g., (E & Yu, *Commun Math Stat*, 2018)

General approaches:

- Galerkin type projection
 - ▶ e.g., (Meade & Fernandez, *Math Comput Model*, 1994), (Kharazmi et al., *arXiv*, 2019)
- **strong form (Physics-informed neural networks)**
 - ▶ e.g., (Dissanayake & Phan-Thien, *Commun Numer Meth En*, 1994), (Lagaris et al., *IEEE Trans Neural Netw*, 1998), (Raissi et al., *J Comput Phys*, 2019)



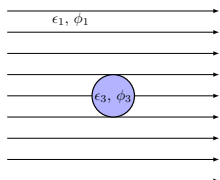
Inverse problems

Challenge: *small* data + *incomplete* physics laws

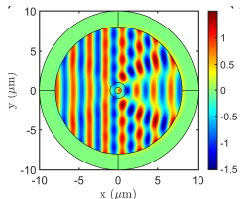
Invisible cloaking

Permittivity ϵ

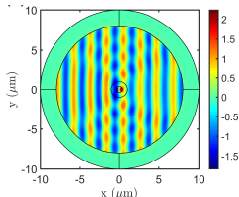
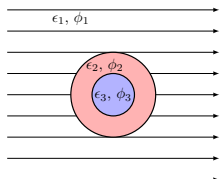
Electric field ϕ without coating



joint work with Prof. Luca Dal Negro (Boston U)



Electric field ϕ with coating

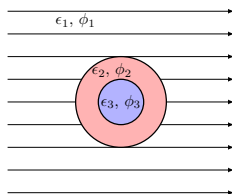


Chen, Lu, et al., *Opt Express*, 2020



Invisible cloaking

Goal: Given ϵ_1 and ϵ_3 , find $\epsilon_2(x, y)$ s.t. $\phi_1 \approx \phi_{1,target}$



Helmholtz equation ($k = \frac{2\pi}{\lambda}$)

$$\nabla^2 \phi_i + \epsilon_i k^2 \phi_i = 0, \quad i = 1, 2, 3$$

Boundary conditions:

- Outer circle: $\phi_1 = \phi_2, \epsilon_1 \frac{\partial \phi_1}{\partial \mathbf{n}} = \epsilon_2 \frac{\partial \phi_2}{\partial \mathbf{n}}$
- Inner circle: $\phi_2 = \phi_3, \epsilon_2 \frac{\partial \phi_2}{\partial \mathbf{n}} = \epsilon_3 \frac{\partial \phi_3}{\partial \mathbf{n}}$

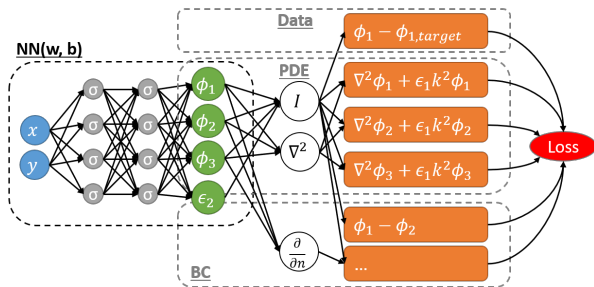
Chen, Lu, et al., *Opt Express*, 2020



BROWN

Physics-informed neural networks (PINNs)

Idea: Embed a PDE into the loss via automatic differentiation (AD)

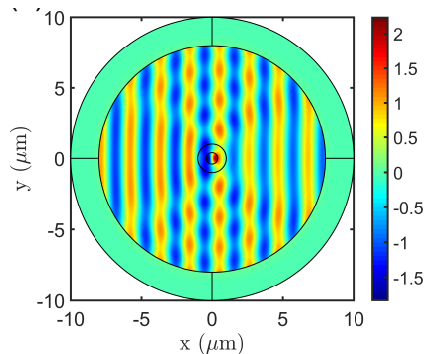


- mesh-free & particle-free
- inverse problems: seamlessly integrate data and physics
- black-box or noisy IC/BC/forcing terms (Pang*, Lu*, et al., *SIAM J Sci Comput*, 2019)
- a unified framework: PDE, integro-differential equations (Lu et al., *SIAM Rev*, accepted), fractional PDE (Pang*, Lu*, et al., *SIAM J Sci Comput*, 2019), stochastic PDE (Zhang, Lu, et al., *J Comput Phys*, 2019)

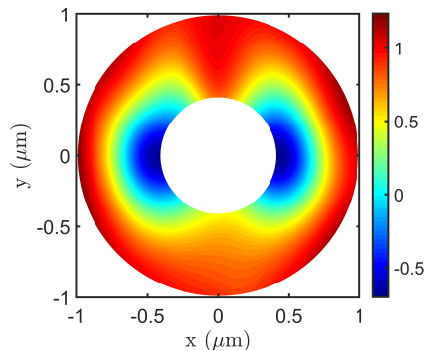


Invisible cloaking

Electric field ϕ_i



Permittivity ϵ_2



Chen, Lu, et al., *Opt Express*, 2020



Approximation: Loss $\rightarrow 0$?

Theorem (Universal approximation theorem; Cybenko, 1989)

Let σ be any continuous sigmoidal function. Then finite sums of the form $G(x) = \sum_{j=1}^N \alpha_j \sigma(y_j \cdot x + \theta_j)$ are dense in $C(I_d)$.

Theorem (Pinkus, 1999)

Let $\mathbf{m}^i \in \mathbb{Z}_+^d$, $i = 1, \dots, s$, and set $m = \max_{i=1, \dots, s} |\mathbf{m}^i|$. Assume $\sigma \in C^m(\mathbb{R})$ and σ is not a polynomial. Then the space of single hidden layer neural nets

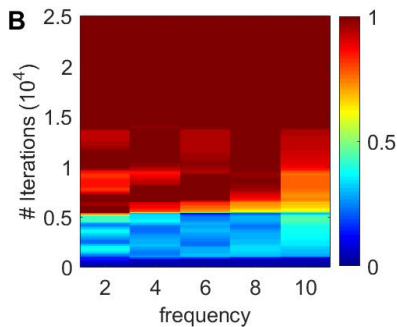
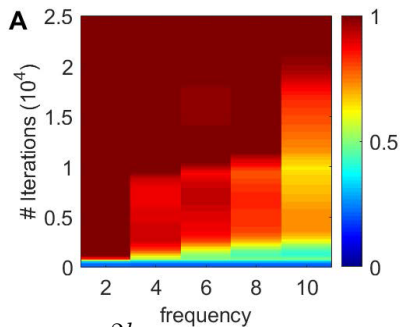
$$\mathcal{M}(\sigma) := \text{span}\{\sigma(\mathbf{w} \cdot \mathbf{x} + b) : \mathbf{w} \in \mathbb{R}^d, b \in \mathbb{R}\}$$

is dense in

$$C^{\mathbf{m}^1, \dots, \mathbf{m}^s}(\mathbb{R}^d) := \bigcap_{i=1}^s C^{\mathbf{m}^i}(\mathbb{R}^d).$$

Optimization

- A: approximate $f(x) = \sum_{k=1}^5 \sin(2kx)/(2k)$
 - ▶ learn from low to high frequencies (Rahaman et al., *ICML*, 2019; Xu et al., arXiv, 2019)
- B: solve the Poisson equation $-f_{xx} = \sum_{k=1}^5 2k \sin(2kx)$
 - ▶ all frequencies are learned almost simultaneously
 - ▶ faster learning



Frequency = $2k$

Lu et al., *SIAM Rev*, accepted



BROWN

Generalization: Residual-based adaptive refinement (RAR)

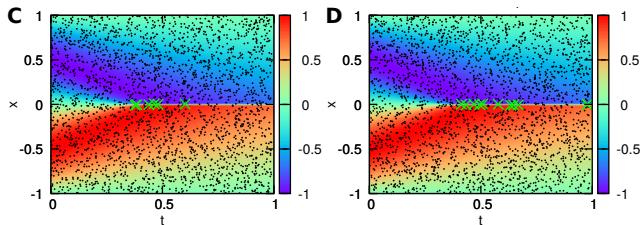
Challenge: Uniform residual points are not efficient for PDEs with steep solutions.

e.g., Burgers equation ($x \in [-1, 1]$, $t \in [0, 1]$):

$$\frac{\partial u}{\partial t} + u \frac{\partial u}{\partial x} = \nu \frac{\partial^2 u}{\partial x^2}, \quad u(x, 0) = -\sin(\pi x), \quad u(-1, t) = u(1, t) = 0.$$

- Idea:** adaptively add more points in locations with large PDE residual

$$\left\| f \left(\mathbf{x}; \frac{\partial \hat{u}}{\partial x_1}, \dots, \frac{\partial \hat{u}}{\partial x_d}; \frac{\partial^2 \hat{u}}{\partial x_1 \partial x_1}, \dots, \frac{\partial^2 \hat{u}}{\partial x_1 \partial x_d}; \dots; \boldsymbol{\lambda} \right) \right\|$$



10,000 (Raissi et al., *J Comput Phys*, 2019) \downarrow 2,540

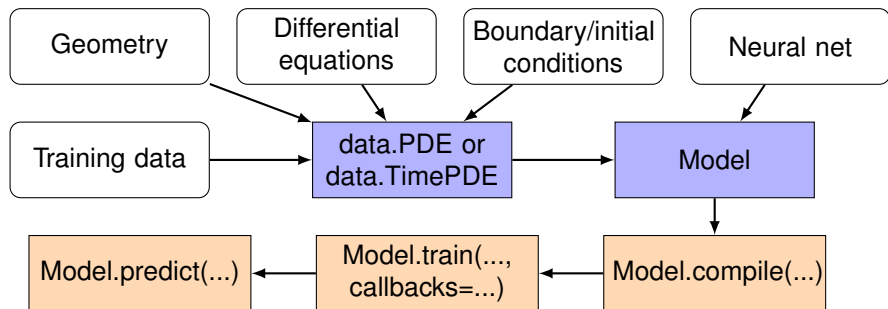
Lu et al., *SIAM Rev*, accepted



BROWN

Usage of DeepXDE

Solving differential equations in DeepXDE is no more than **specifying the problem using the build-in modules**.



I. Time-independent problems: Poisson equation

2D Poisson equation over an L-shaped domain $\Omega = [-1, 1]^2 \setminus [0, 1]^2$:

$$-\Delta u(x, y) = 1, \quad (x, y) \in \Omega, \quad u(x, y) = 0, \quad (x, y) \in \partial\Omega$$

1 geometry

```
1 geom = dde.geometry.Polygon(  
2     [[0, 0], [1, 0], [1, -1], [-1, -1], [-1, 1], [0, 1]])
```

2 PDE via automatic differentiation in TensorFlow (tf.gradients)

```
1 def pde(x, y):  
2     dy_x = tf.gradients(y, x)[0]  
3     dy_x, dy_y = dy_x[:, 0:1], dy_x[:, 1:]  
4     dy_xx = tf.gradients(dy_x, x)[0][:, 0:1]  
5     dy_yy = tf.gradients(dy_y, x)[0][:, 1:]  
6     return -dy_xx - dy_yy - 1
```

3 BC: Dirichlet, Neumann, Robin, periodic, and a general BC

```
1 def boundary(x, on_boundary):  
2     return on_boundary # Default: entire geometry boundary  
3 def func(x):  
4     return np.zeros([len(x), 1]) # Value  
5  
6 bc = dde.DirichletBC(geom, func, boundary)
```

I. Time-independent problems: Poisson equation

④ “data”: geometry + PDE + BC + “training” points

```
1 data = dde.data.PDE(  
2     geom, pde, bc, num_domain=1000, num_boundary=100, ...)
```

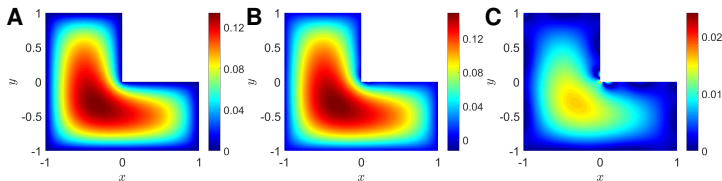
⑤ network, e.g., feed-forward network

```
1 net = dde.maps.FNN([2]+[50]*4+[1], "tanh", "Glorot uniform",  
2     ...)
```

⑥ model: data + network, and train

```
1 model = dde.Model(data, net)  
2 model.compile("adam", lr=0.001, ...)  
3 model.train(epochs=50000, ...)
```

(A) spectral element, (B) PINN, (C) error



II. Time-dependent problems: Diffusion equation

$$\frac{\partial u}{\partial t} = \frac{\partial^2 u}{\partial x^2} - e^{-t}(1 - \pi^2) \sin(\pi x), \quad x \in [-1, 1], t \in [0, 1]$$

with Dirichlet BC. (Exact solution $u(x, t) = e^{-t} \sin(\pi x)$)

- geometry

```
1 geom = dde.geometry.Interval(-1, 1)
2 timedomain = dde.geometry.TimeDomain(0, 1)
3 geomtime = dde.geometry.GeometryXTime(geom, timedomain)
```

- IC, similar to Dirichlet BC

```
1 def func(x):
2     return np.sin(np.pi * x[:, 0:1]) * np.exp(-x[:, 1:])
3
4 ic = dde.IC(geomtime, func, lambda _, on_initial: on_initial)
```

- “data”: geometry + PDE + BC/IC + “training” points

```
1 data = dde.data.TimePDE(
2     geomtime, ..., [bc, ic],
3     num_domain=40, num_boundary=20, num_initial=10, ...)
```

III. ODE/PDE system: Lorenz system

$$\frac{dx}{dt} = \rho(y - x), \quad \frac{dy}{dt} = x(\sigma - z) - y, \quad \frac{dz}{dt} = xy - \beta z$$

- ODE system

```
1 def Lorenz_system(x, y):
2     y1, y2, y3 = y[:, 0:1], y[:, 1:2], y[:, 2:]
3     dy1_x = tf.gradients(y1, x)[0]
4     dy2_x = tf.gradients(y2, x)[0]
5     dy3_x = tf.gradients(y3, x)[0]
6     return [
7         dy1_x - C1 * (y2 - y1),
8         dy2_x - y1 * (C2 - y3) + y2,
9         dy3_x - y1 * y2 + C3 * y3
10    ]
```

- ICs

```
1 ic1 = dde.IC(geom, ..., ..., component=0)
2 ic2 = dde.IC(geom, ..., ..., component=1)
3 ic3 = dde.IC(geom, ..., ..., component=2)
```

IV. Integro-differential equations: Volterra IDE

$$\frac{dy}{dx} + y(x) = \int_0^x e^{t-x} y(t) dt, \quad y(0) = 1$$

• kernel

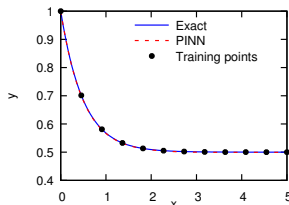
```
1 def kernel(x, s):  
2     return np.exp(s - x)
```

• IDE

```
1 def ide(x, y, int_mat):  
2     rhs = tf.matmul(int_mat, y) # \int_0^x exp(t-x) y(t) dt  
3     lhs1 = tf.gradients(y, x)[0] # dy/dx  
4     return (lhs1 + y)[: tf.size(rhs)] - rhs
```

• “data”: geometry + IDE + BC + “training” points

```
1 data = dde.data.IDE(..., ide, ..., quad_deg=20, kernel=kernel,  
    ...)
```



V. Inverse problems

A diffusion-reaction system on $x \in [0, 1], t \in [0, 10]$:

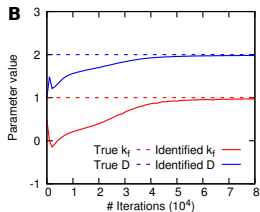
$$\frac{\partial C_A}{\partial t} = D \frac{\partial^2 C_A}{\partial x^2} - k_f C_A C_B^2, \quad \frac{\partial C_B}{\partial t} = D \frac{\partial^2 C_B}{\partial x^2} - 2k_f C_A C_B^2$$

- Define D and k_f as trainable variables

```
1 kf = tf.Variable(0.05)
2 D = tf.Variable(1.0)
```

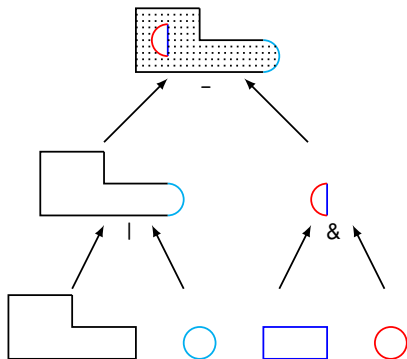
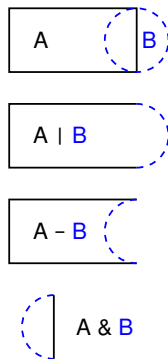
- Define C_A measurements as Dirichlet BC (the same for C_B)

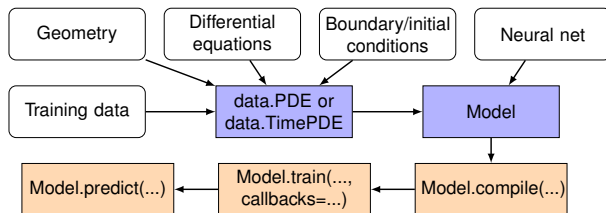
```
1 observe_x = ... # All the locations of measurements
2 observe_Ca = ... # The corresponding measurements of Ca
3 ptset = dde.bc.PointSet(observe_x)
4 observe = dde.DirichletBC(geomtime, ptset.values_to_func(
    observe_Ca), lambda x, _: ptset.inside(x), component=0)
```



Complex geometry: Constructive solid geometry

- Primitive geometries
 - ▶ interval, triangle, rectangle, polygon, disk, cuboid, sphere
- boolean operations:
 - ▶ Union $A|B$
 - ▶ difference $A - B$
 - ▶ intersection $A \& B$





- Short and comprehensive code. NO redundant code!
- Only TensorFlow knowledge: `tf.gradients`
- Almost all useful techniques, e.g., uncertainty quantification via dropout, early stopping, saving & loading network
- Well-structured and highly configurable; callback mechanism

Other functions

- Multi-fidelity learning (Lu et al., *PNAS*, 2020)
- Learning nonlinear operators (Lu et al., arXiv:1910.03193, 2019)



DeepXDE

Installation

- `pip install deepxde`
- `conda install -c conda-forge deepxde`



<https://github.com/lululxvi/deepxde>

<https://deepxde.readthedocs.io>

- Reporting bugs
- Suggesting enhancements
- Pull requests
- Questions



BROWN